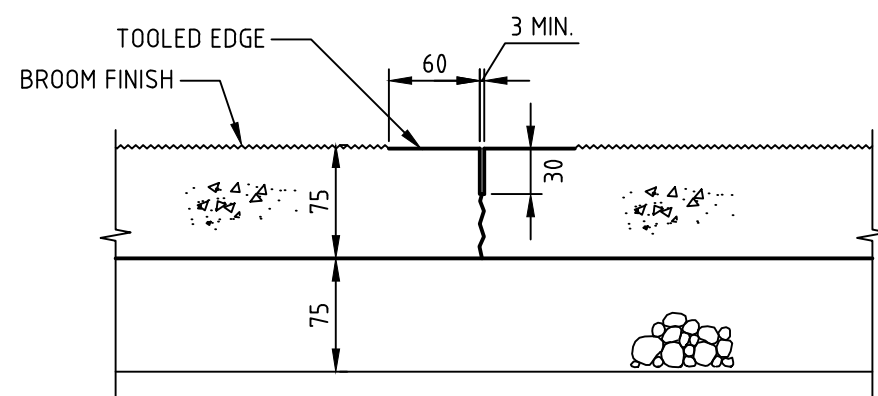


EXPANSION JOINT (EJ)

SCALE 1:10

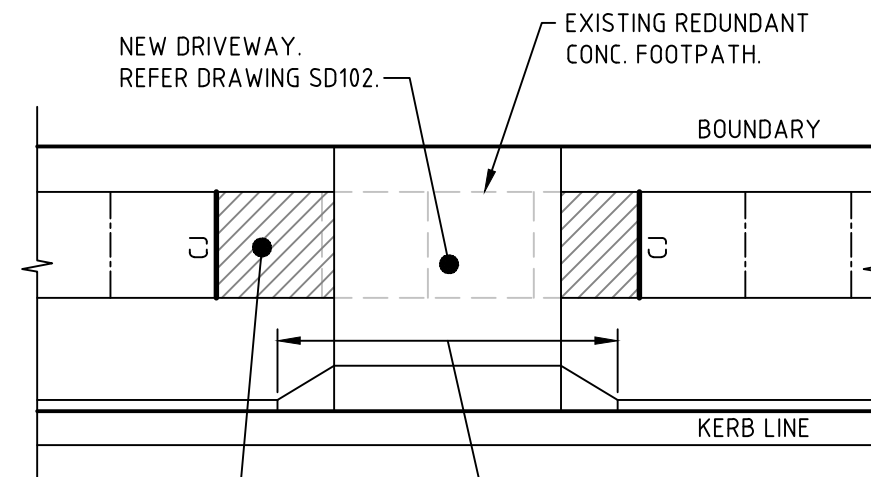


TOOLED JOINT (TJ)

SCALE 1:5

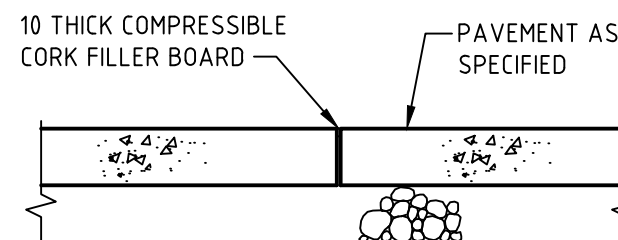
NOTES

1. ALL CONCRETE TO HAVE A MINIMUM COMPRESSIVE STRENGTH OF 32MPa U.N.O.
2. REINFORCEMENT MESH SHALL NOT BE USED UNLESS NOTED OTHERWISE.
3. ALL PATHS SHALL BE IN PLAIN CONCRETE WITH BROOM FINISH AT 90° TO THE DIRECTION OF TRAVEL UNLESS NOTED OTHERWISE.
4. ALL NEW CONCRETE SLABS SHALL BE FOUNDED ON MIN. 75mm DGB20 COMPACTED TO 95% MODIFIED DRY DENSITY.
5. COUNCIL'S SUPERINTENDENTS REPRESENTATIVE SHALL BE CONTACTED FOR THE FOLLOWING INSPECTIONS:
 - a. INITIAL INSPECTION PRIOR TO EXCAVATION
 - b. FORMWORK INSPECTION
 - c. FINAL INSPECTION (28 DAYS FOLLOWING COMPLETION OF WORKS)
6. FOOTPATH VERTICAL ALIGNMENT TO FOLLOW TOP OF KERB ALIGNMENT WHERE POSSIBLE.
7. FOOTPATH WIDTH (W) = 1400mm UNLESS INSTRUCTED OTHERWISE BY COUNCIL.
8. FOOTPATHS CROSSFALL SHALL GRADE DOWN TO KERBLINE UNLESS INSTRUCTED OTHERWISE BY COUNCIL.
9. DISTURBED GRASS VERGES MUST BE REINSTATED WITH TOP SOIL AND TURF TO THE SATISFACTION OF THE SUPERINTENDENT.



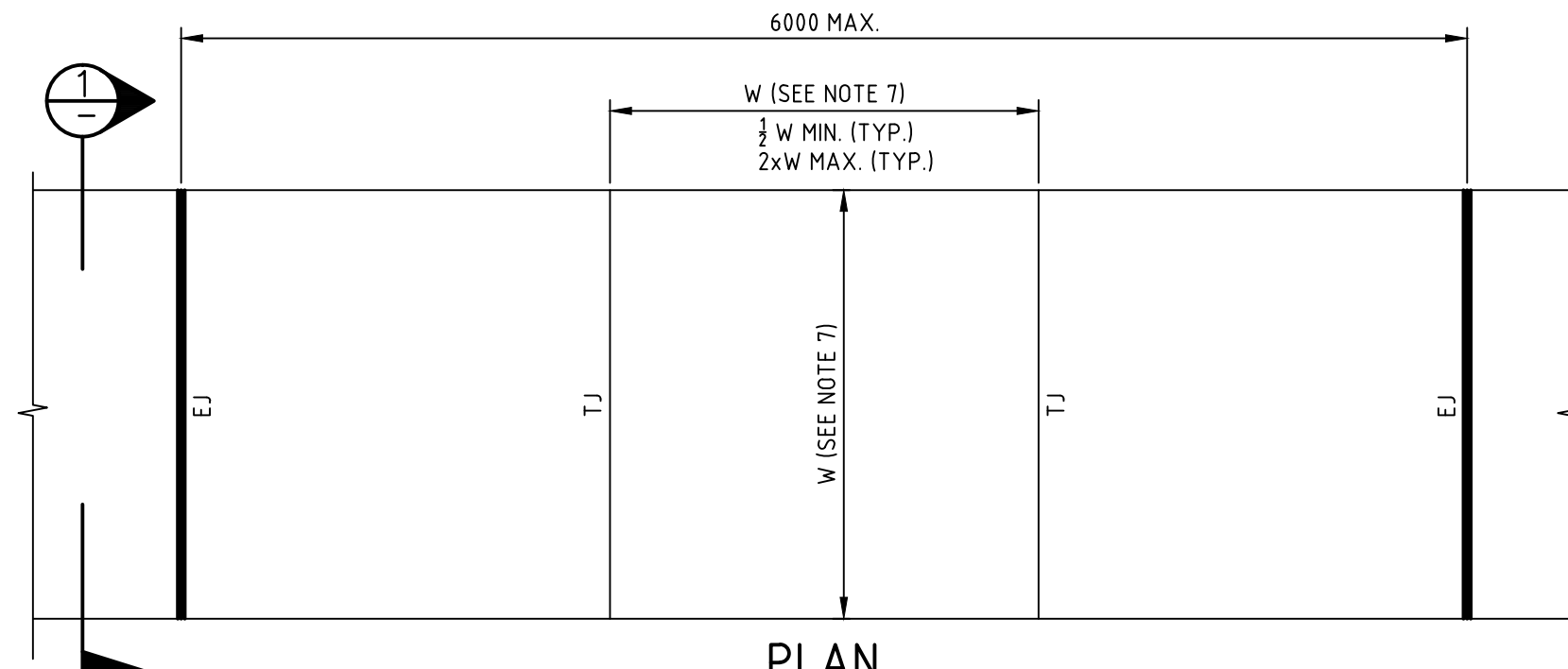
**FOOTPATH ADJUSTMENT AT
NEW VEHICULAR CROSSING**

NOT TO SCALE



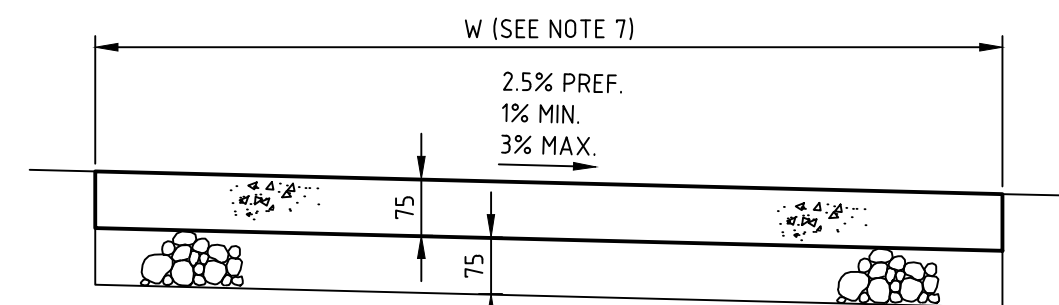
CONSTRUCTION JOINT (CJ)

SCALE 1:10



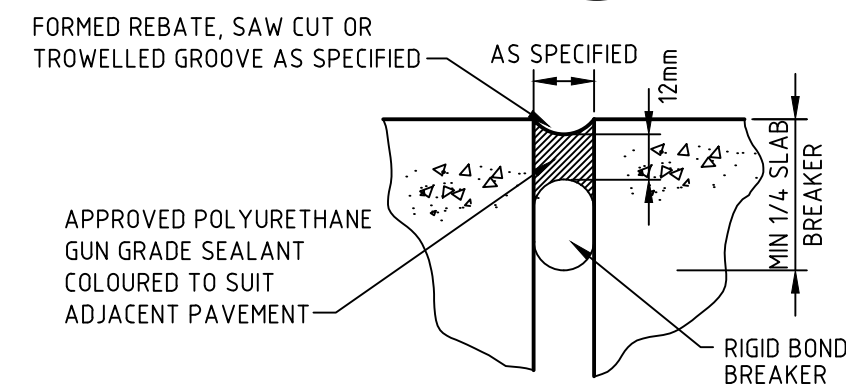
PLAN

SCALE 1:20



SECTION

SCALE 1:10

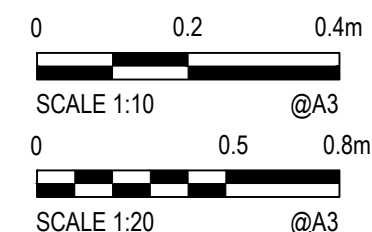


DETAIL A

N.T.S.

**Mosman
COUNCIL**

CONCRETE FOOTPATH



REV.
B
DATE:
JUN 2014

DRAWING No.
SD104