

**MINUTES OF ACCESS & MOBILITY
COMMUNITY CONSULTATIVE COMMITTEE
HELD ON 14 SEPTEMBER 2021, 9AM**

PRESENT:**Councillors**

Mayor Carolyn Corrigan
Cr Jacqui Willoughby

Resident Members

Pip Friedrich

Staff

Andrew Smith, Manager Community Services
Chandra Chandrawansa, Manager Engineering
Steve Smith, Manager Environment and Open Space

APOLOGIES:

Nell Rickard

MINUTES:

Taken by Elizabeth Kemp, Team Leader CD Admin

	MATTERS DISCUSSED	ACTION
1.	WELCOME The Mayor welcomed everyone in attendance.	
2.	APOLOGIES Nell Rickard	
3.	ADOPTION OF MINUTES OF THE PREVIOUS MEETING The minutes of the previous meeting were adopted. Adopted: Cr Willoughby Seconded: Pip Friedrich	
4.	DISCLOSURES OF NON-PECUNIARY INTEREST There were no disclosures of non-pecuniary interest.	
5.	UPDATE AROUND DIAP CONSULTATION The draft DIAP Consultation has been distributed to the Committee. This will be going to the 5 October Council Meeting, and will then be on exhibition for 4 weeks or possibly longer due to the timing of the elections. This will then go back to the February Council Meeting for a final review. International Day of People with Disability is in December. Council is not planning a big event this year due to COVID-19 restrictions. Instead, Council will run something with a focus on amplifying voices of those living with disability and linking this back to the draft DIAP Consultation.	

	<p>It was noted that the draft DIAP notes that Council is meeting 5 of the 7 MOSPLAN areas. The Committee noted that we are probably meeting all of them and that we reflect this in the plan.</p> <p>The Plan is in a final draft stage. Committee to review the draft DIAP Consultation and provide any glaring correction to Andrew ASAP.</p>	<p>Manager Community Services</p> <p>Access Committee</p>
6.	<p>UPDATE ON AGEING FRAMEWORK</p> <p>Council has developed a Positive Ageing Framework to guide its future actions in supporting older residents to lead full and rich lives. The report documents Council's vision for ageing, the demographic profile, policy and planning context, consultation findings and suggested actions. Council thanks the community members, service providers, volunteer peer consultants, and other stakeholders who contributed their valuable feedback. It is now available from Council's website here.</p> <p>There has been positive feedback on the Ageing Framework from those who took part in the consultation.</p> <p>The Committee thanks Dianne Page for her work in this space, which has been recognised by other Councils.</p> <p>Pip Friedrich expressed concern about older people being unable to use the COVID-19 check ins at local businesses if they do not have smart phones. State Government have produced a document to download as an alternative to this, otherwise and there is the option to add people who don't have smart phones as 'dependents' within the QR code check in system. Council has communicated as much information as possible around COVID-19 requirements in newsletters to residents. Council has also started to discuss how the vaccination pass will work for older people without smartphones, however, it is understood that this will be led by State government.</p>	
7.	<p>UPDATE ON ACCESS RAMP AT CLIFTON GARDENS</p> <p>The location for the access ramp at Clifton Gardens was chosen based on people being able to access the beach safely. Committee members expressed their concerns about the need for a handrail. The consultant engaged on the original project advised there was no need for a handrail when taking into consideration the overall design including that the ramp is a walkway, the aspect and the visibility. In order to make changes to the existing ramp, there would need to be a new consultation process.</p> <p>Council has observed the use of the ramp, recording it being used for prams but not by those with mobility issues. It was suggested that staff conduct a survey of people down at Clifton Gardens to ascertain if they use the ramp. No further action at this stage, unless residents raise their concerns</p> <p>Council has advertised the ramp broadly and can do so again once restrictions ease.</p>	<p>Manager Community Services</p>

8.	<p>OVERVIEW OF THE CONCEPT FOR MOSMAN SQUARE (ATTACHED)</p> <p>The Design Concept has been distributed to the Committee and is attached to these minutes.</p> <p>Council received a grant from the legacy program which will fund the upgrade. The works are to be completed by December 2022. The Access & Mobility Committee and Visual Amenity Committee are asked to provide their feedback on the Design Concept.</p> <p>The Committee raised some initial concerns, including if the permeable paving would be problematic for those with mobility issues and whether a lack of contrast with walls may be problematic for those with visibility issues. These will be looked at in more detail when the time comes to finalise design. The Mayor suggested outdoor activities included in the design could activate the area, including hopscotch and an outdoor chess board. Further comments from the Committee to be received by mid-October.</p> <p>Council will have extra pavers in stock at the Depot for allow for pavers along the footpath ripped up by telecommunications companies and other services.</p> <p>The Mayor thanked Polly and other staff involved for their work on this.</p>	Committee
9.	<p>UPDATE ON 'PLAY FOR ALL' ACCESSIBLE SWING PROGRAM</p> <p>Council has been approached by a resident to replace a swing in each playground with an accessible swing with a high back. The 12 accessible swings have been sponsored by Council and local businesses and are ready to be installed.</p> <p>Further information can be found here.</p>	
10.	<p>GENERAL BUSINESS</p> <p>Pip Friedrich congratulated Mosman Council on the big text option on the new Council website.</p> <p>Pip Friedrich request that Council continue to look at disability options at Balmoral Beach.</p> <p>The Mayor requested that the Manager Community Services distribute to the Committee a video created by Midnight Feast featuring people with disability.</p>	Manager Community Services
11.	<p>THANK YOU FROM CHAIR TO THE COMMITTEE FOR THEIR CONTRIBUTION</p> <p>The Mayor thanked the Committee, Manager Engineering and Manager Environment and Open Space as well as their teams, Diane Lawrence, Manager Community Services and Dianne Page for their contribution.</p>	

	Cr Willoughby and Pip Friedrich also thanked Manager Engineering in particular for improving Mosman's outdoor spaces and the efficient work to fix problematic pavers along the footpaths.	
	MEETING CLOSED The meeting closed at 10.20am	



DESIGN CONCEPTS

A Sequence of Spaces



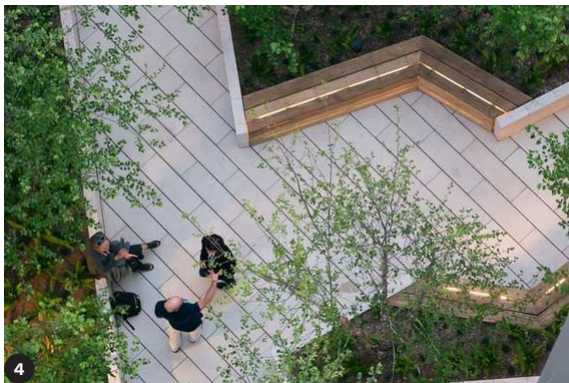
1 Retained fountain and stair and upgraded finishes



2 Tree in lush planting and seating edge



3 Permeable paving



4 Seating nooks and small decks



5 Nature Play under fig tree



6 Loose furniture under a green undercroft



7 Lawn & Event space



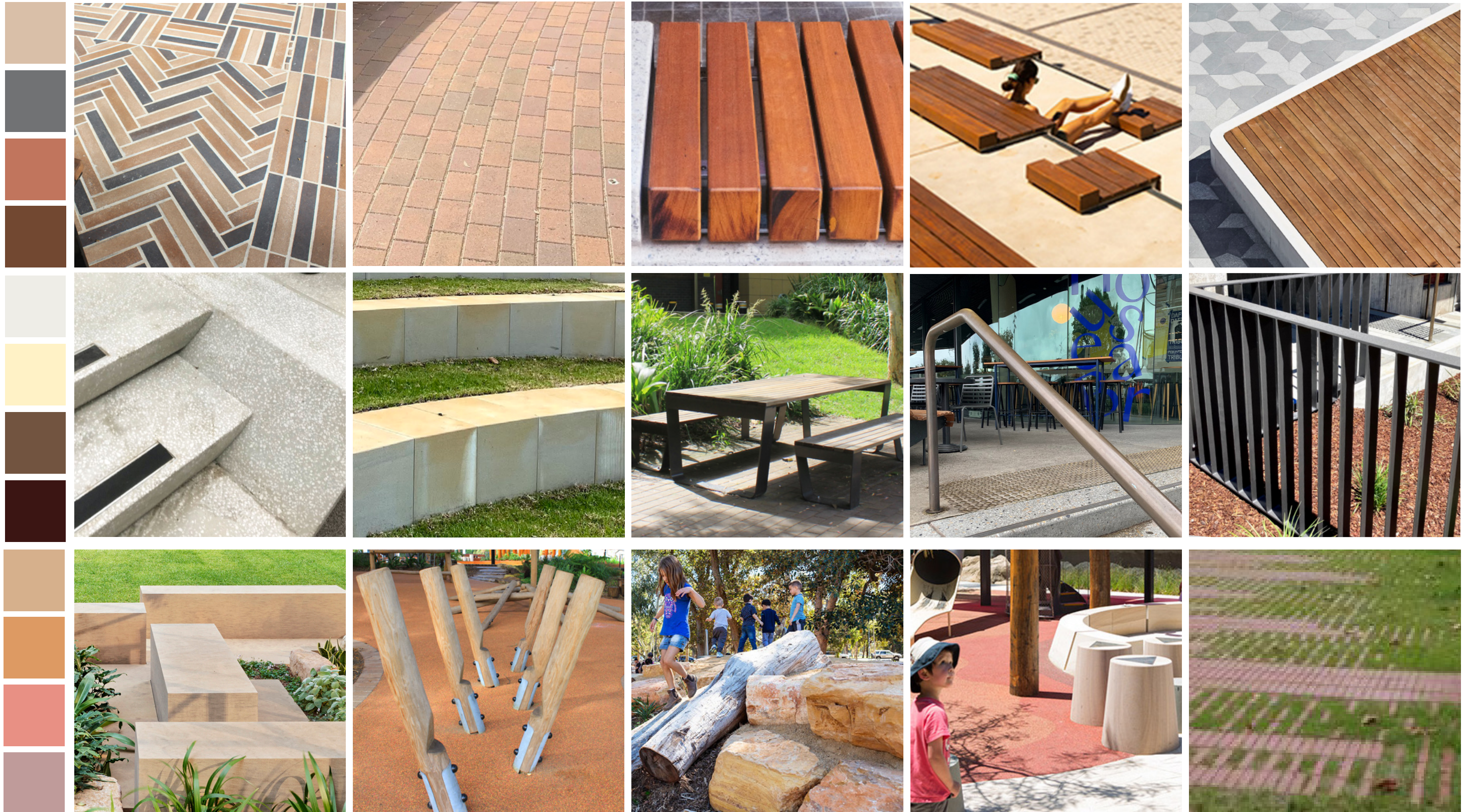
8 Higher lawn and seating opportunities

A Sequence of Spaces



PROPOSED PALETTE

Materials Palette



Lighting Palette



Planting Character

Plant mixes have been developed to suit the differing conditions or character of the new public domain.

Proposed planting was selected to be **predominantly Australian native species** and where possible endemic to the Sydney Basin. With low water use species, for both tree and understory, selected where possible.

- 1 Native Australian tree species
- 2 WSUDs - species which assist with the water treatment
- 3 Shady palette featuring lush species
- 4 Native and endemic coastal vegetation
- 5 Flush planting beds to capture surface water



Indicative Planting Palette

TREES



Ficus rubiginosa ●



Angophora costata ● ●



Eucalyptus punctata ● ●



Tristaniopsis laurina ● ●

DECIDUOUS TREES



Zelkova serrata 'Village Green' ●

WSUD

Groundcovers and Clumping Plants



Isolepis nodosus ● ●



Juncus usitatus ● ●

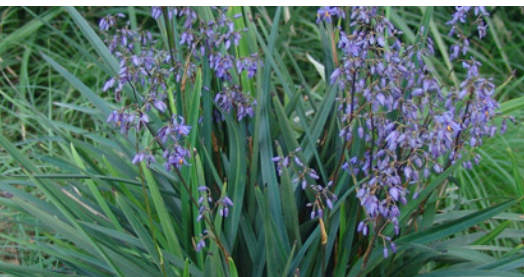


Lomandra longifolia ● ● ●

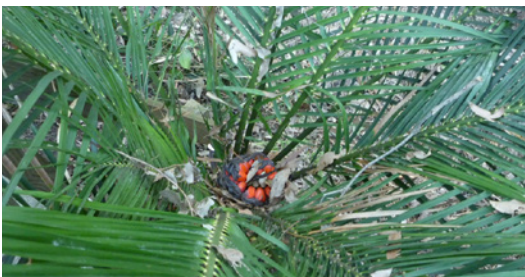


Blandfordia nobilis ● ●

Feature Plants



Dianella caerulea ● ● ●



Macrozamia communis ● ● ●



Farfugium japonicum ●



Banksia robur ●

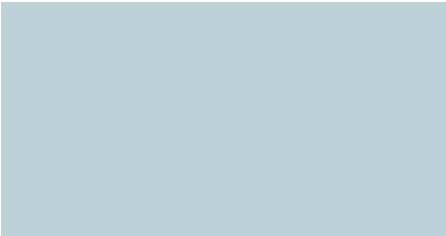
- Native Species
- Species which is Part of the Native Mosman Plant Guide
- Species with Historic Indigenous Use
- Exotic Species

Indicative Planting Palette



SHADE / PARTIAL SHADE

Groundcovers and Clumping Plants



Poa sieberiana ●



Lamium maculatum 'White Nancy' ●



Plectranthus argentatus ●



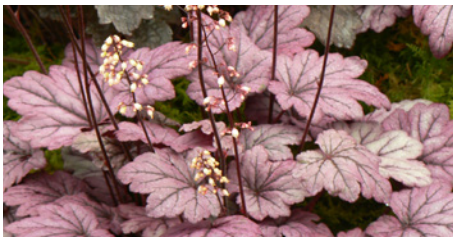
Hydrangea quercifolia ●



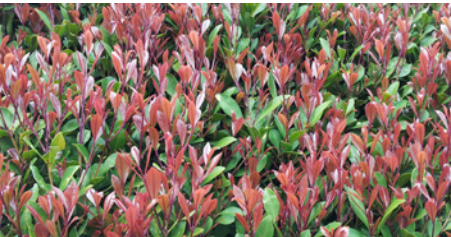
Agave attenuata 'Boutin Blue' ●

Feature Plants

Tall Shrubs / Small Trees



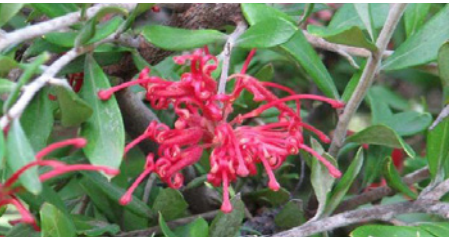
Heuchera 'Sugar Plum' ●



Acmena smithii 'Minor' ● ●



Acanthus mollis ●



Grevillea oleoides ● ●



Doryanthes palmeri ● ●



Pratia purpurascens ● ●



Heuchera 'Lime Marmalad' ●



Babingtonia virgata cv ●



Arthropodium cirratum ●



Cyathea australis ● ● ●



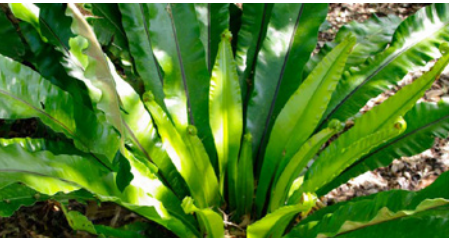
Juniperus conferta ●



Dichondra repens ● ●



Dianella little jess ●



Asplenium australasicum ● ●



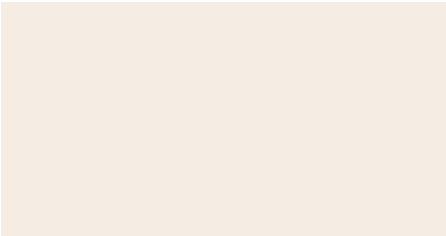
Raphiolepis indica 'Oriental Pearl' ●

- Native Species
- Species which is Part of the Native Mosman Plant Guide
- Species with Historic Indigenous Use
- Exotic Species

Indicative Planting Palette

SUN / PARTIAL SUN

Groundcovers and Clumping Plants



Poa sieberiana ●



Actinotus helianthi ● ● ●



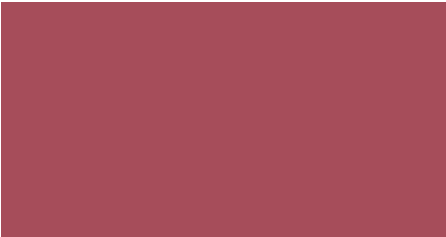
Convolvulus cneorum ●



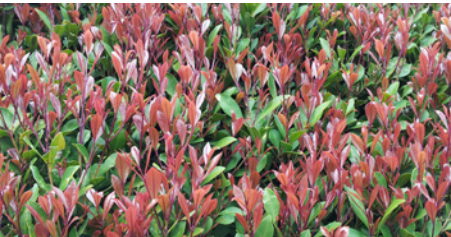
Kunzea ambigua ● ●



Leptospermum flavescens 'Cardwell' ●



Imperata cylindrica ●



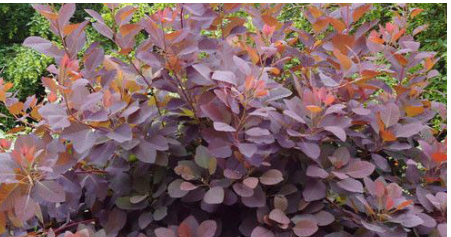
Acmena smithii 'Minor' ● ●



Gaura lindheimeri 'Siskiyou Pink' ●



Anigozanthos sp. ●



Cotinus coggygri ●



Carpobrotus edulis ● ●



Phlomis fruticosa ●



Gazania 'Double Gold' ●



Banksia 'Birthday Candles' ● ●



Acacia longifolia ● ● ●



Lomandra 'Little Con' ●



Pittosporum tobira Miss Muffet' ●



Crassula ovata ●



Euphorbia characias ssp wulfenii ●



Telopea speciosissima ●

- Native Species
- Species which is Part of the Native Mosman Plant Guide
- Species with Historic Indigenous Use
- Exotic Species