

The background is a collage of various colored sticky notes (green, blue, yellow, orange) with handwritten text in different colors. Some visible text includes "Strong", "See", "MORE USE", "DRILL", "GROUPS", "MOSMAN HANNTEN", "SPORT - SOCIAL", "Runners", and "Schools".

Mosman COUNCIL

COMMUNITY CONNECTIONS ROUNDTABLE SUMMARY

JANUARY 2023

Mosman Council
Community Connections Roundtable Summary
January 2023

Availability

The Mosman Council Community Connections Roundtable Summary is available on Council's website
mosman.nsw.gov.au

Copyright 2023

All information, graphics and photographs are copyright of Mosman Council unless otherwise noted. The content is protected by Australian and International Copyright and Trademark laws.

For further information contact

Mosman Council
Civic Centre
573 Military Road
Spit Junction NSW 2088
9978 4000
council@mosman.nsw.gov.au

Mosman
COUNCIL



**Mosman Council
Community Connections
Roundtable Summary
January 2023**

Contents

Introduction	1
Engagement Demographic and Structure	1
Community Asset Mapping	6
Focus Session 1	9
Focus Session 2	11
Focus Session 3	14
Community Training	17
Conclusion and next steps	18



Introduction

This report outlines the approach and outcomes for the community and stakeholder engagement conducted at the Community Connections Roundtable event as part of the implementation of the MOSPLAN 2022-2032 Building Community Resilience Project.

The Community Connections Roundtable was Mosman Council's inaugural Community Connections event. It will shape the roadmap to a better connected and more resilient community. It represents Council's commitment to working with the community in strengthening local connection and relationships and activating individual and community participation whilst placing the community at the centre of local decision making.

The objectives of the Community Connections Roundtable were to:

- Conduct an asset mapping activity to provide a long-term social direction that builds upon existing services, social resources and skills in the community
- Provide a network for building the skills and knowledge of the community to respond to social challenges through strong partnerships
- Connect Community Champions to strengthen the Mosman community's ability to recover from unexpected social, political, environmental and financial shocks and stresses

Engagement Demographic and Structure

The Roundtable was held at Mosman Art Gallery Grand Hall on 2 November 2022 for a duration of 5 hours.

A total of 72 people registered for the event with 56 people attending on the day. 11 Staff from Mosman Council's Community Services team also participated and facilitated the conversations.

The structure of the conversations was over 8 tables with each table making up a focus group of 8-9 participants with attendees being from the Mosman local area, led by a facilitator from Council's Community Services team who also acted as a note taker.

Below is the day's agenda:

Time	Activity
9.30am	Registrations, tea and coffee
10am	Welcome and housekeeping
10.05am	Acknowledgement of Country from Adam Byrne
10.10am	A Welcome from Mosman Mayor Carolyn Corrigan
10.20am	Introduction to Asset Mapping
10.30am	Community Asset Mapping Activity
10.50am	Focus Session 1
11.20am	Morning tea
11.35am	Guest Speaker – Northern Beaches Council on the 'It Takes a Village' Project
11.50am	Focus Session 2
12.20pm	Know Teach Learn Individual Mapping Activity
12.40pm	Lunch and networking
1.25pmm	Guest Speaker – Co Founder and President of the 'Sydney Library of Things'
1.40pm	Focus Session 3
2.10pm	Wrap up and Feedback
2.30pm	Close

The Focus Sessions each had a specific topic, starting with identifying Mosman's greatest assets, moving onto challenges and finally next steps the community can take to build resilience and connection. The purpose of the focus groups was to understand values, ideas and aspirations for the local Mosman community themselves. Participants were encouraged to think innovatively about what they would like to see in their community, drawing on examples from other areas such as the two guest speakers from Northern Beaches and North Sydney Councils. Whilst each individual focus group session raised several key topics, there were some topics that became a running theme throughout. This report will summarise these key findings.

Participants were recruited directly from a pool of local contacts who had previously indicated their interest in participating in engagement activities, those already known to be active in the Mosman community, as well as local community groups and organisations operating in or covering the Mosman area. Posters were also distributed around Mosman Square and several Council facilities as well as online through various digital channels such as the Mosman Daily Round-up and online community pages.

Mosman Bunnings
Roses
Potted plants

flowers

Sea Scout
Mosman Sea Scout
+ fire hall

Mosman events
- cinema
- wine

John Bunnings

100%

Bushland

Walking paths

Mosman pool

Wharf
Look at
look at
look at

Heritage buildings

Mosman Art Gallery

Heritage buildings

Taronga Zoo

Shopping

Mosman Library

Navy base

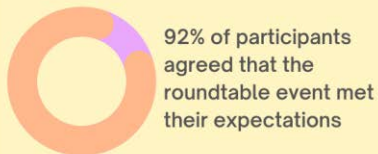
Shopping
look at
look at
look at

Below is a list of community groups, local businesses and organisations that registered for the event:

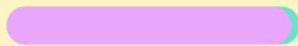
- Balmoral Nippers
- Balmoral Sailing Club
- Bendigo Bank - Mosman branch
- Brighten Counselling & Psychotherapy
- Bushcare,
- Carer Gateway- Your Side
- Centrum Printing Pty Ltd
- ConnieM buyers advisory/designer
- Don Adan coffee
- Ex Community Youth Forum chairperson
- good-grief.com.au (a free, independent website to help people with death and grief)
- Goodstart Mosman
- Ground Up
- Head High Disability Service
- Higher Octave Health
- Inside Story
- Kayak Fitness
- Montessori Dance
- Mosman Chamber of Commerce
- Mosman Community Gardeners
- Mosman Lawn Tennis Club
- Mosman Netball Club
- Mosman Preparatory School
- Mosman RSL sub-Branch
- Mosman Symphony Orchestra
- NSW Guild Embroiderers Mosman
- Oneland
- Probus
- PureFree
- Raise Foundation
- Rotary
- Spit Swimming Club
- St Vincent de Paul Sydney Harbour North
- Twilight Aged Care
- University of the Third Age Harbourside North
- 2mpower Womens Coaching

Feedback forms were given to participants at the end of the day. Overall, the event was well received; below are some comments of what was best liked and some statistics from the evaluations:

Overall, community members found the roundtable workshops very interesting. Giving them an average rating of 4.4/5



97% of participants would recommend the event to a friend



"Wide diversity of needs, views, solutions offered"

"Listening, working towards a common goal, generosity of council"

"Collaboration of ideas, openness to accept suggestions, networking opportunities"

"Hearing that the council are keen to listen and grow community in partnership, for the betterment of all"

"The marvellous atmosphere and great thoughts from the tables- more days like this at LEAST every year"

"Extremely well organised event and a highly enjoyable experience. Now have an appreciation of the importance of network value and cooperation and to establish initiatives and thoughts on others. three contacts made today and one to follow up!"

"Thank you for holding this event, please continue to hold his forum it's fantastic!"

"A truly worthwhile day!! My mind is full and a joy to be here"

"I really enjoyed the small group discussions and hearing about the shared values, ideas and vision"

"Opportunity to meet likeminded residents of Mosman"

"Meeting others interested in community. Hearing the concepts and ideas that I had not thought about"

"The speakers were excellent"

Community Asset Mapping

To help identify and document existing resources in the Mosman community, the participants were asked to inventory these assets and strengths by sticking up post-it notes with as many known assets as possible around the room, split into four categories:

- Individual
- Associations
- Institutions
- Physical and economic

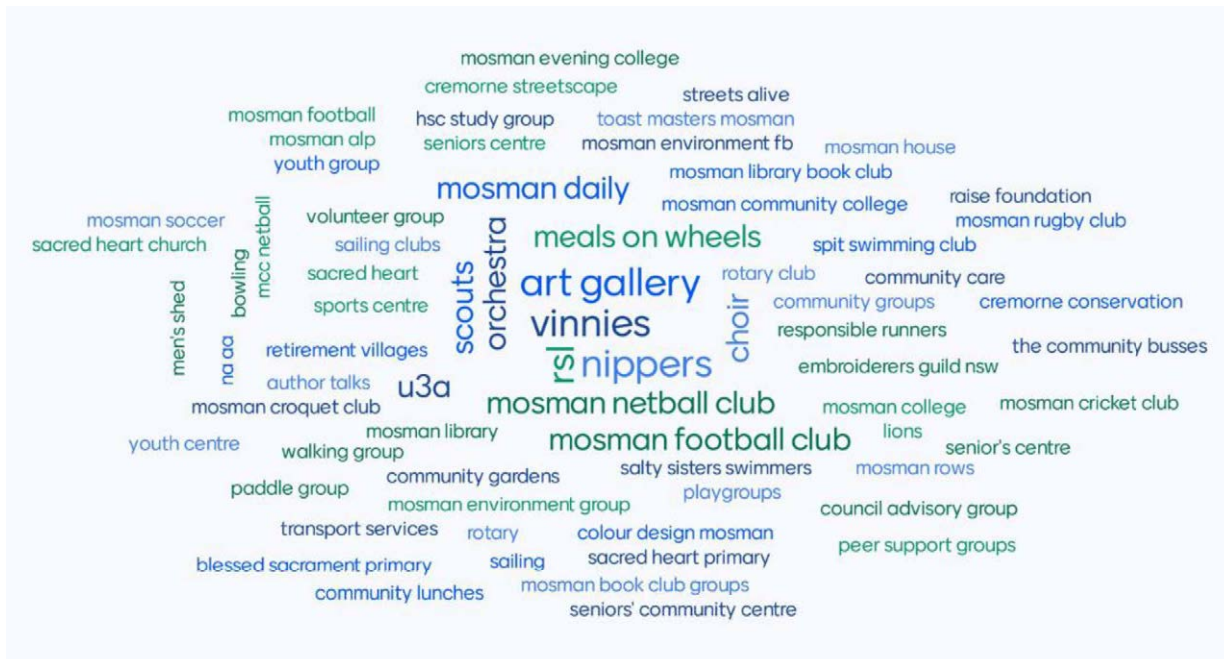
There was some crossover to be seen between the four categories. The individual assets included the talents, skills and passions of individuals, stories, heritage, culture, local identity and values. The associations focused on local community groups and networks. Institutions mostly included government and non-government agencies while the physical and economic assets ranged across land, property, buildings, equipment, productive work of individuals, consumer spending power and local business assets.

Below are the visual summaries of assets captured – it is clear that for such a small Local Government Area, Mosman is rich in resources. Council would like to continue engaging Community Champions in order to work together to build on these assets to address the needs of the community and improve overall resilience and wellbeing.

Individual:



Associations:



Institutions:



Physical and economic assets:

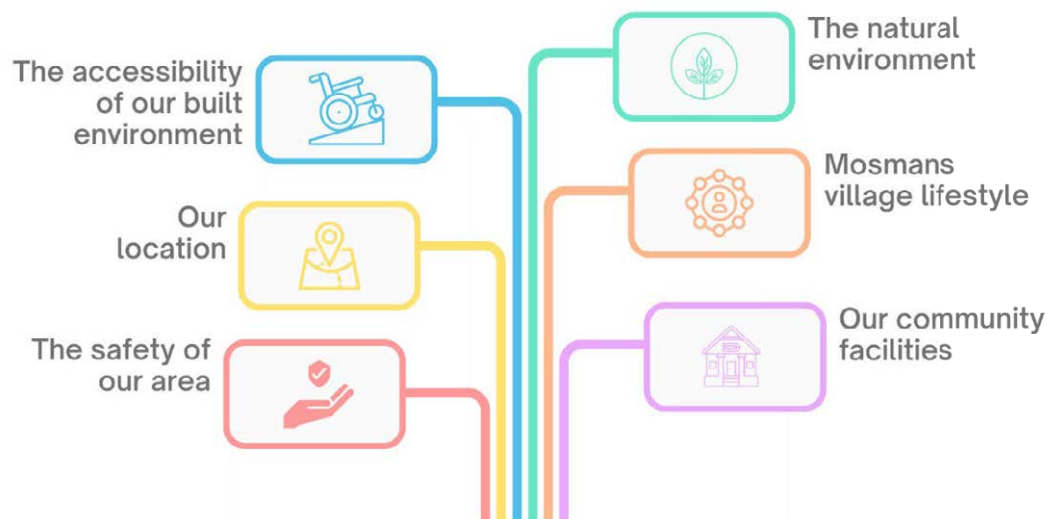


Focus Session 1:

What are our community's most important assets?

As part of this session, participants were asked to consider what makes them proud to be part of the Mosman community, drawing upon their own individual values and experiences.

Thematic analysis indicates that the most important assets of Mosman (according to the community members involved in the roundtable) can be understood through the following 6 distinct themes:



Commonalities throughout each theme are as follows

- Natural environment (100% of tables identified this as an asset - 8/8)
 - Balmoral beach
 - Green backyards
 - Wildlife
 - Middle head
 - Bush and walking tracks
 - Local parks
 - Communal garden space
 - The foreshore

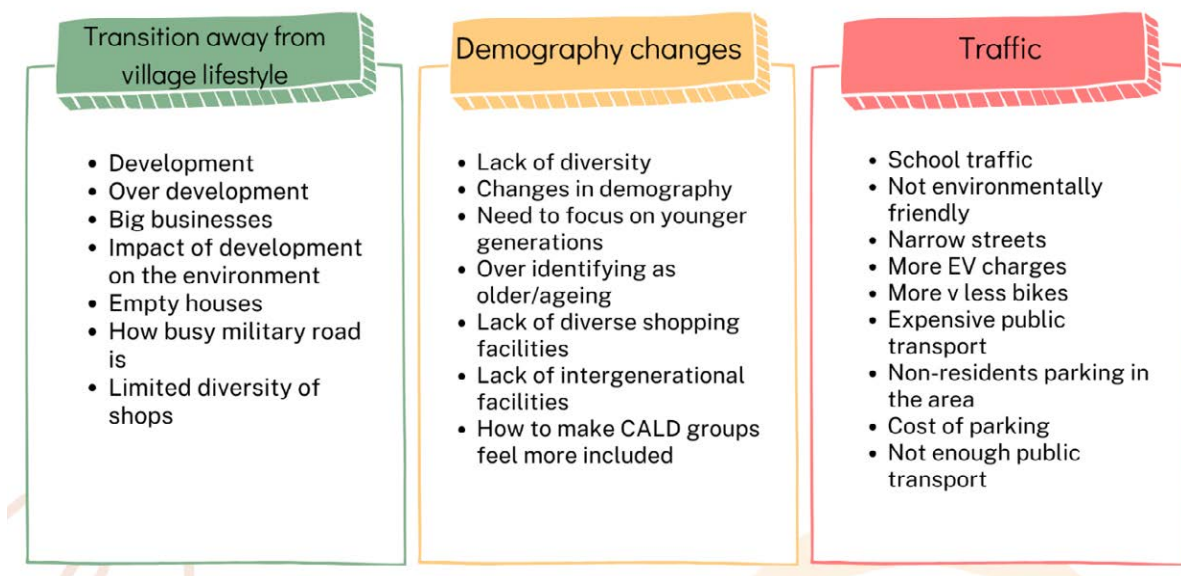
- Village lifestyle (100% of tables identified this as an asset - 8/8)
- Volunteers
- Variety of shops, cafes, and bars
- Community members who care
 - Bumping places – the confidence people feel that they will run into someone they know
 - Sense of belonging
 - Inclusivity
 - Heritage
- Community facilities (100% of tables identified this as an asset - 8/8)
 - Art gallery
 - Council is known to care for community
 - Sports and recreation facilities
 - Mosman library
 - Pools
 - Schools
 - Community Care services
 - Surf clubs
 - Churches
 - Mosman Meals
 - Seniors Centre
 - Youth Centre
 - Shops
 - Parks and ovals
 - Bridgepoint
- Location (62.5% of tables identified this as an asset - 5/8)
 - Mosman's proximity to the CBD and Sydney Harbour
- Accessibility (62.5% of tables identified this as an asset - 5/8)
 - The ease of access to community facilities
 - Availability of public transport (busses and ferries)
 - Access to the community for elderly and people with disabilities
- Safety (25% of tables identified this as an asset - 2/8)
- The physical safety of the area
 - Political stability
 - Political transparency

Focus Session 2:

What kind of factors might stop the Mosman community from thriving?

Participants were encouraged to think about both positive and negative attributes and experiences of an area so this session focused on factors that might prevent the Mosman community from thriving or factors that might threaten the assets identified in the first focus session. The discussion can be broken down into a total of 12 distinct themes. Below are the top 3 most discussed themes:

- Transition away from a village lifestyle (100% of tables agree- 8/8)
- Demography changes/ lack of diversity (87.5% of tables agree- 7/8)
- Traffic (75% of tables agree- 6/8)



Here are the remaining 9 themes discussed and their commonalities:

- Lack of understanding of the different needs in the community (62.5% of tables identified this as a factor - 5/8)
 - Lack of services/public spaces
 - Lack of intergenerational safeguards
 - Inability to reach middle age group/connect the 'groups'
 - Assumption of socioeconomic status
 - Assumption of privilege
 - Lack of collaboration with different people/agencies
 - People lack time
 - People are lacking in social connection

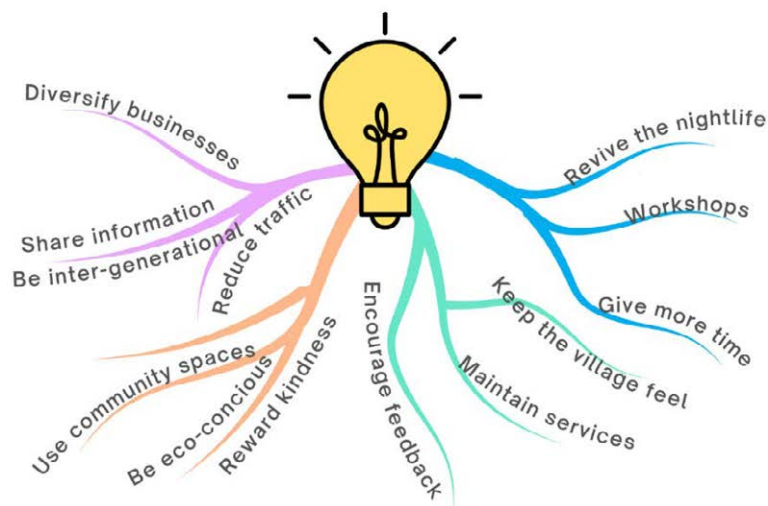


- Lack of knowledge of services (62.5% of tables identified this as a factor - 5/8)
 - Communication
 - Accessible communications
 - Lack of a clear line of communication between council, businesses and residents
 - Mental health concerns going untreated
 - Better shop and service signage
- Accessibility (62.5% of tables identified this as identified this as a factor - 5/8)
 - Crossing road timers are very quick
 - Hindering social participation
 - Not having parking close to shops
 - No wheelchair accessibility to ocean
 - Lack of changing spaces in public bathrooms
 - Narrow footpaths
 - Poorly maintained public infrastructure (holes, uneven walking paths)
- Cost of living (50% of tables identified this as a factor - 4/8)
 - Lack of affordable housing
 - Lack of tax on empty houses
 - Rent is very high
 - Cost of living in general is more expensive in this area
 - Housing prices are high
- Government/ council (37.5% of tables identified this as a factor – 3/8)
 - Lack of funding
 - Over bureaucracy
 - Strict rules
 - Amalgamation
- Lack of nightlife (25% of tables identified this as a factor - 2/8)
 - Mosman closes down at night
 - Loss of revenue
 - Leaves the area open to even more development/malls
- Not utilising community spaces (25% of tables identified this as a factor - 2/8)
 - Lack of community spaces
 - Cost of maintaining community spaces
 - Lack of spaces for community meetings
- Threats to nature/the heritage of Mosman (25% of tables identified this as a factor - 2/8)
 - Climate change
 - Erosion of heritage
 - Too much reliance on private transport
 - Lack of vegetation/bush/managed gardens

- Concerns surrounding safety (12.5% of tables identified this as a factor – 1/8)
 - Crime
 - Unsafe spaces
 - Narrow minds
 - General feelings of being unsafe

Focus Session 3:

What can we do to build community resilience and connection to help our community thrive?



For this session, participants were asked to consider what changes were in their scope to implement as Community Champions to further grow both connection and resilience across Mosman. A total of 14 suggestions were discussed; more detail of each theme and its commonalities can be found below. These suggestions were not solely aimed at community – some also included council, businesses or all three.

- Improve how information is shared (council and businesses) (87.5% of tables agree- 7/8)
 - Have stalls at markets
 - Welcome to suburb pack for new residents
 - Communication
 - Share information with more lead time to give people more time to organise
 - Have alternate ways of communication outside of the website such as more verbal communication, using Mosman Now to promote different groups people can join, use

road runners, door knockers, flyers and telephone trees – 1 person rings 2 people, those people each ring 2 more people, etc

- Have more signage along main roads to inform the wider community
- Developing an effective local community directory to list all businesses and services
- Strive to be more street friendly, to make sure Mosman keeps its' village feel (council + broader community members) (62.5% of tables agree – 5/8)
 - Charity meals (loneliness during the holidays)
 - Community clubhouses
 - Community tables at coffee shops
 - Host neighbour/street parties/meetups in your street
 - Reinvigorate neighbourhood watch
- Foster intergenerational partnerships (council, community, businesses) (37.5% of tables agree- 3/8)
 - Intergenerational connection
 - An inclusive all ages community hub
 - More intergenerational activities
 - Rename 'Seniors Centre' to 'Mosman Community Centre'
 - Seek to form better partnerships with other councils (council) (37.5% of tables agree- 3/8)
 - Pay attention to what other councils are doing in their community
- Diversify our businesses (businesses) (25% of tables agree- 2/8)
 - More casual food outlets rather than cafes (food carts, kiosks)
- Rewarding and acknowledging (council, community, businesses) (25% of tables agree- 2/8)
 - Reward kindness
 - Acknowledging community champions
- Be more eco-conscious (council, community, businesses) (25% of tables agree- 2/8)
 - More public gardens
 - Turn nature strips into permaculture ecosystems
 - Better recycling
 - Adopt a street/tree
- Implement broader feedback mechanisms, particularly for individual feedback (council) (25% of tables agree- 2/8)
 - More focus on individual feedback
- Start workshops (instigated by council but run by community members) (25% of tables agree- 2/8)
 - Series of short workshops led by community after the initial set up by council

- Take active steps to reduce traffic (council, community) (12.5% of tables agree- 1/8)
 - Staggered school hours to assist school traffic
 - Walk home/to school initiative
- Make sure the current services provided by council are maintained (council) (12.5% of tables agree- 1/8)
 - Ensure services Mosman residents currently have access to are maintained and continue in future
- Give more time and volunteer (broader community members) (12.5% of tables agree- 1/8)
 - More volunteers helping with shopping/walking/spending time with the socially isolated
- Revive the night life (Businesses + broader community) (12.5% of tables agree- 1/8)
 - Night/late shopping hours

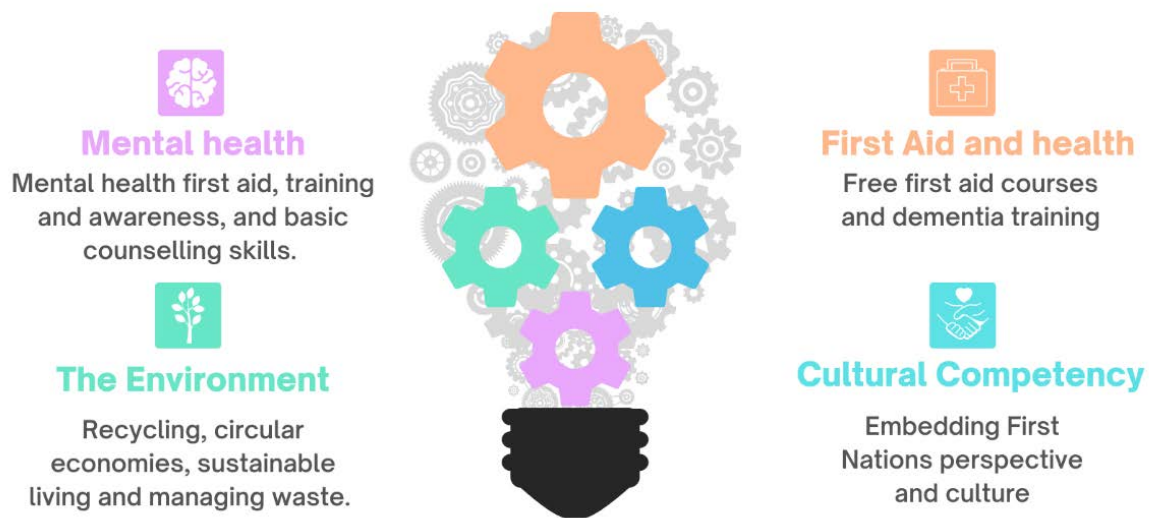


THE
SYDNEY
LIBRARY
of things

THE
SYDNEY
LIBRARY
of things

Community Training

During lunch and networking, participants were asked to write down suggestions for community training they would be interested in attending. There were 16 individual comments made with four clear themes for trainings, as outlined below. It is important to note that some of the training suggested are already offered by Council.



Conclusion and next steps

This report outlines the approach and findings from the Community Connections Roundtable event.

The interactive engagement program on the day ensured that the community's voice was represented and community aspirations were noted and considered as part of the implementation of the MOSPLAN 2022-2032 Building Community Resilience Project.

67 people, including Mosman Council staff, contributed to the discussion.

Outcomes for the day included:

- Undertaking an asset mapping activity
- Providing a networking opportunity for local stakeholders to meet and share skills, knowledge and resources
- Connecting Community Champions to help build a resilient community

Feedback from the day indicated that there was majority value placed on Mosman's natural assets, on the local environment, as well as the village feel lifestyle and local community facilities. The top common concerns raised were about transitioning away from this village lifestyle, demography changes and traffic. There was a high level of interaction about suggested next steps to build connection and resilience, with the majority of participants wanting to focus on improving communication and how information is shared throughout the community.

Themes of accessibility, community safety and social connection were seen throughout the day. Participants told us that they are all intrinsically linked and equally critical to building social sustainability in Mosman.

We heard that empowering the community through capacity building and strengthening neighbourhoods would build resilience.

Next steps for the project include:

- Continuing to identify Community Champions from across the Mosman community including those sections not represented at the event, for example young people, people with disability and CALD communities.
- Delivering tailored training for Community Champions which will be shaped by themes raised at the Roundtable event. This will include skill building for event planning and management, collaboration, partnership and applying for funding opportunities in the local area, community capacity and Community Development principles and communication tools.
- Developing a communication strategy to link-up Community Champions.
- Resourcing and strengthening local groups and providing community development solutions through the community grants program.
- Ongoing support to community to develop their own projects on an ad-hoc basis by continuing to build connections and community leadership and bringing internal and external stakeholders together to work collaboratively to achieve our shared vision for the community.
- Developing a Community Connections Plan to support Council's *Climate Action Plan - Resilience and Adaptation Strategy*.

COMMUNITY
CONNECTIONS
ROUNDTABLE
SUMMARY

JANUARY 2023

Mosman
COUNCIL

